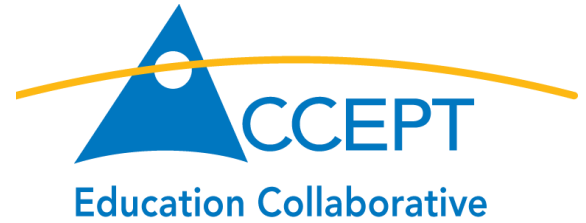
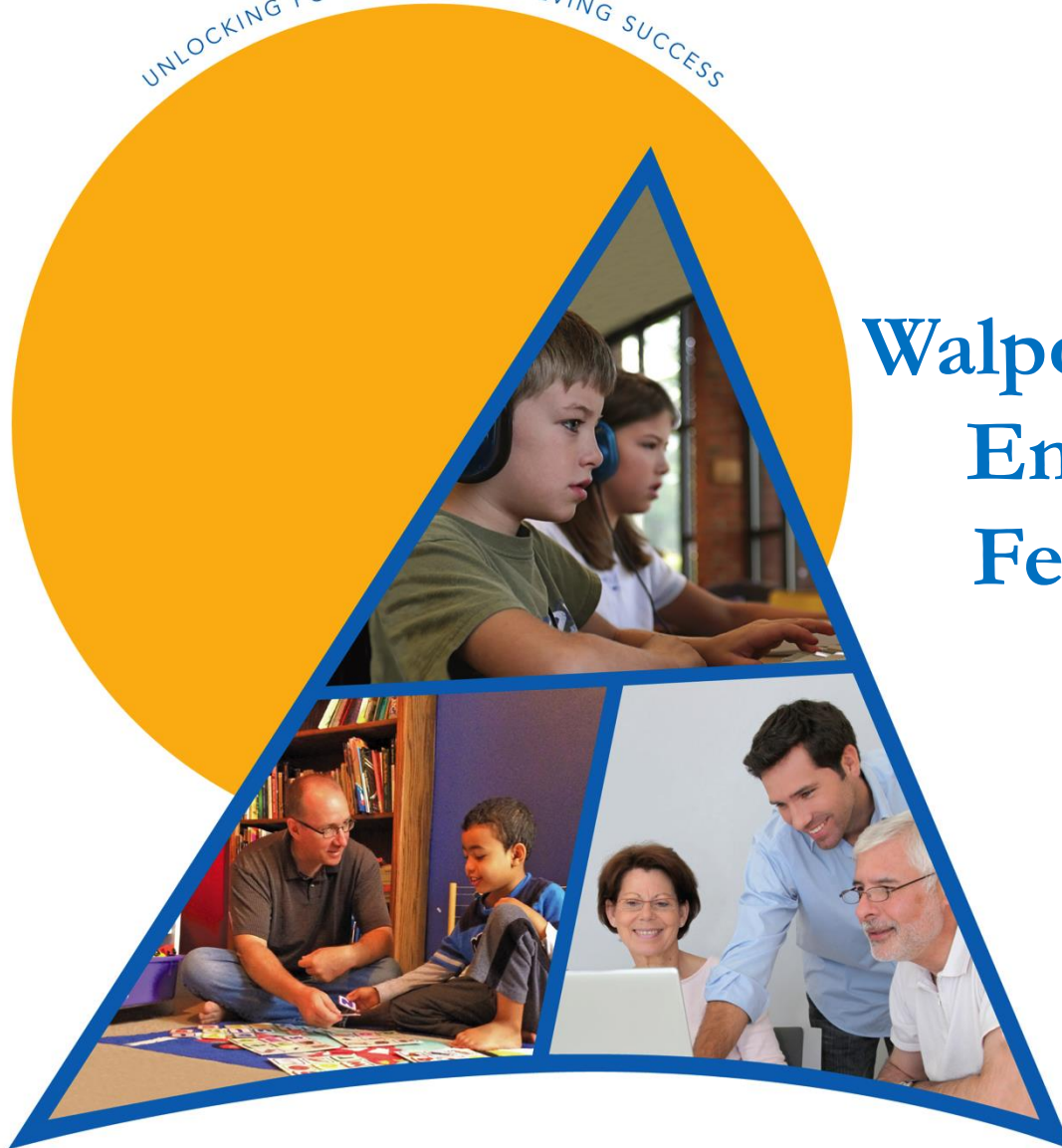


UNLOCKING POTENTIAL • ACHIEVING SUCCESS



Walpole Public Schools Enrollment Study February 25, 2016



accept.org

Reliability of Enrollment Projections

Projections can serve as useful guides for educational planning. The projections are generally more reliable when they are closest in time to the current year. Projections over five years may serve as a guide to future enrollments, and are useful for facility planning purposes.

However, they should be viewed as subject to change.

Source: NESDEC

Reliability of Enrollment Projections

Projections based upon the children in the district will be the most reliable; the second level of reliability will be for those children born but not yet old enough to be in school .

The least reliable category is the future births and impact for building developments.

Source: NESDEC

Cohort Survival Method

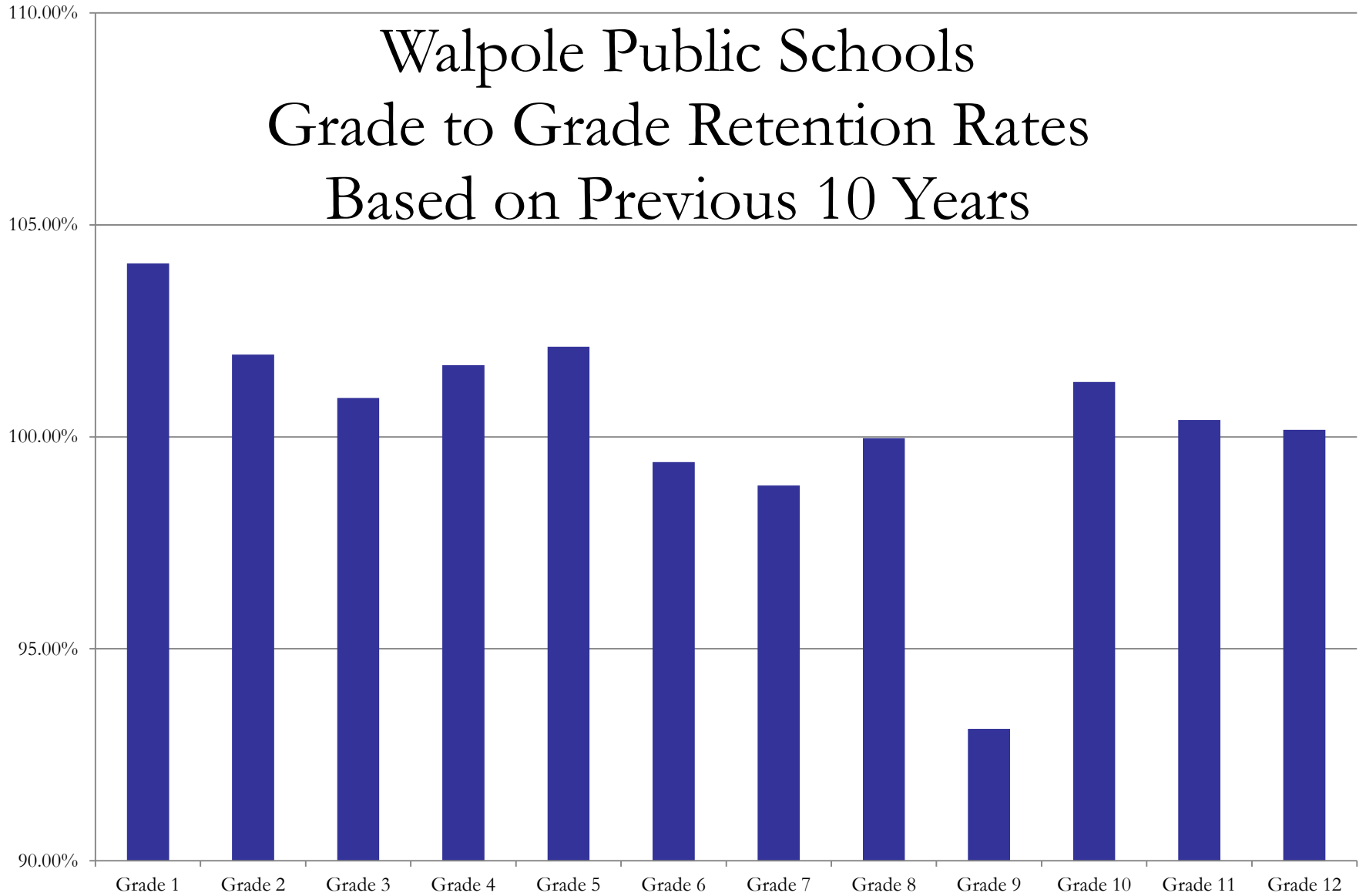
The Cohort Survival Projection Method is a simple method for forecasting what the future population will be based upon the survival of the existing population and the births that will occur.

This method can be applied for any period of time but it typically involves five-year steps. Applied once it would give the population five years ahead.

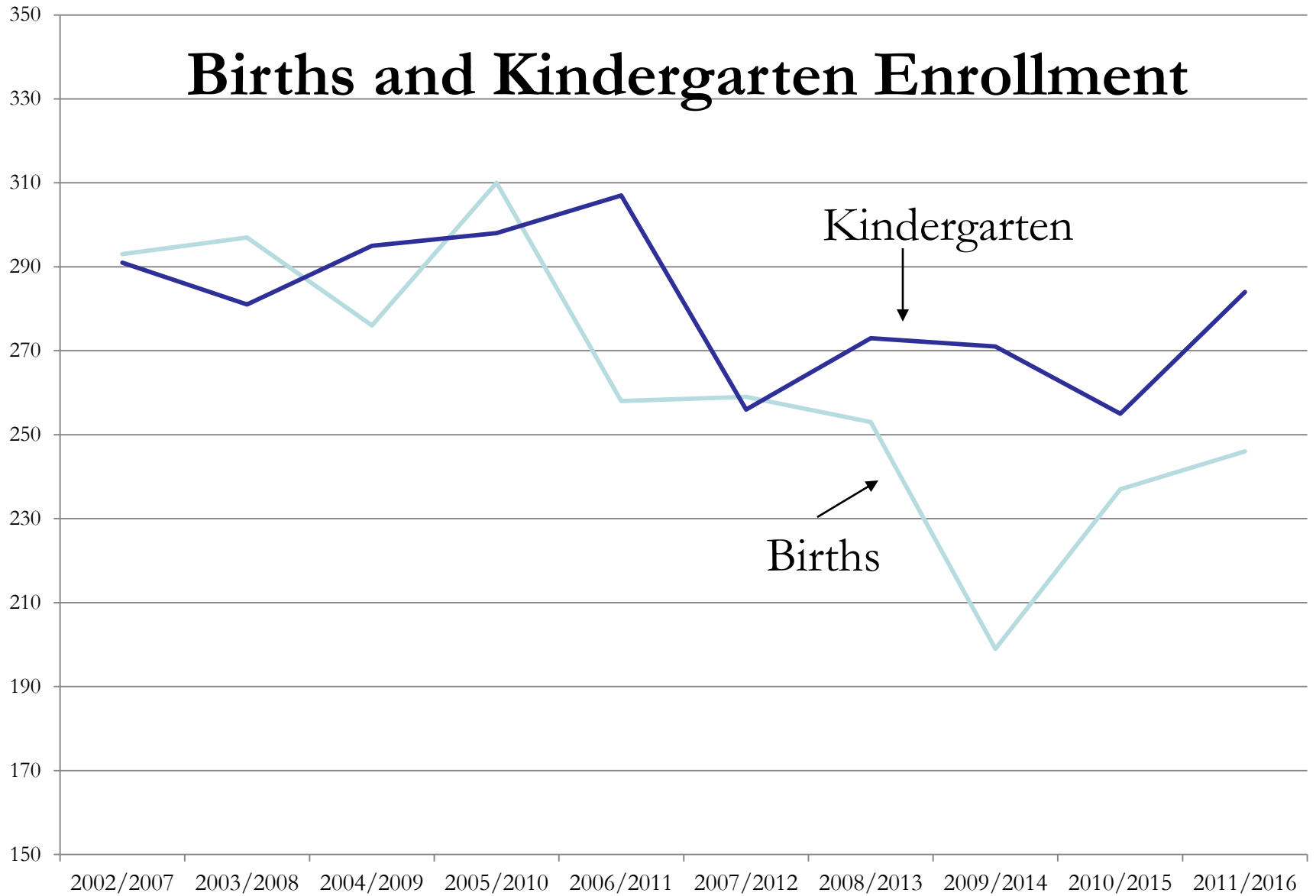
Enrollment Projection Factors:

- ❖ Retention of students
- ❖ Births of Walpole Residents
- ❖ Additional housing stock
 - ✓ 260 enrolled in September, 2018
 - ✓ 17 enrolled in September, 2019
- ❖ In-migration of students

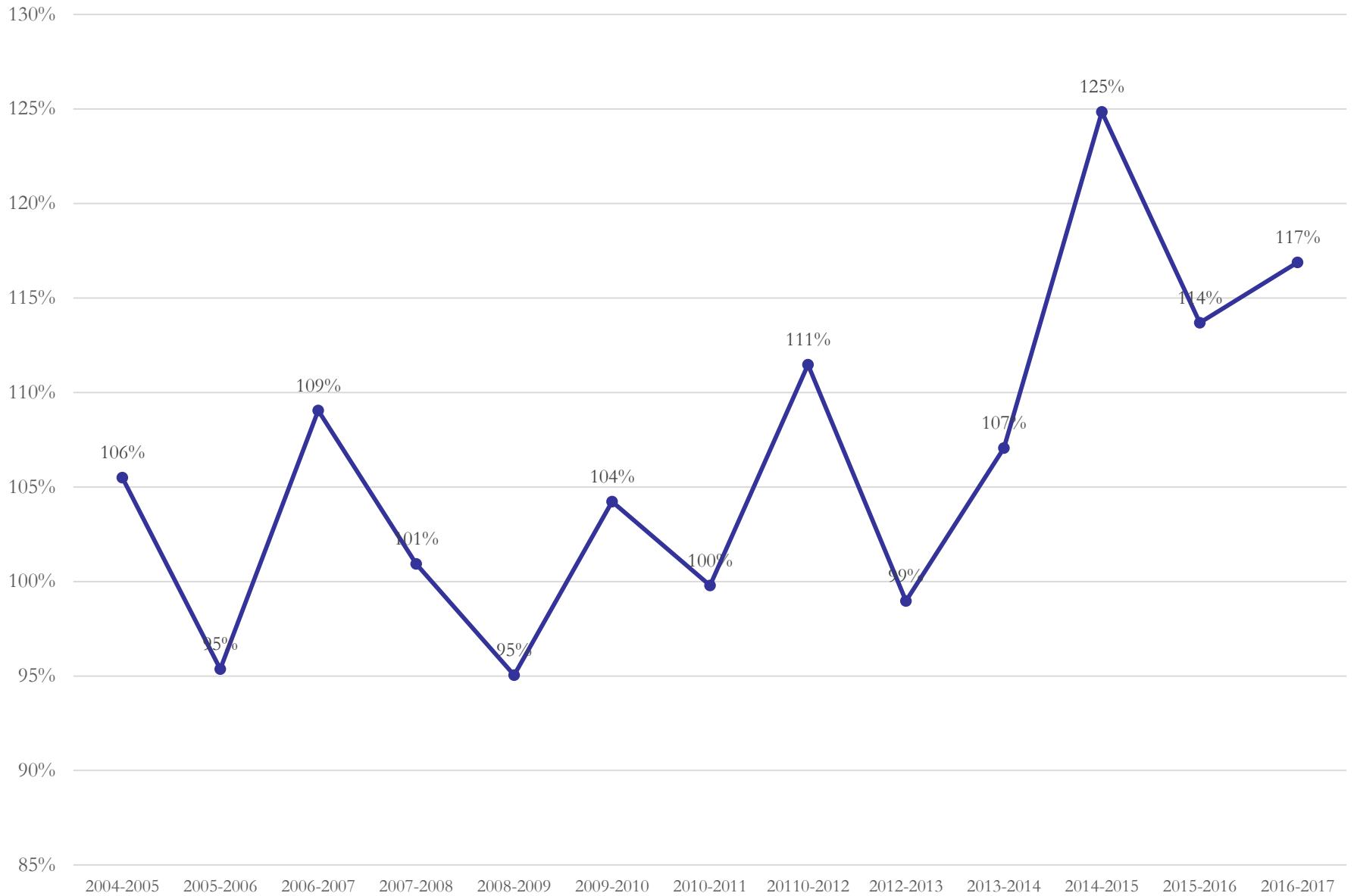
Walpole Public Schools Grade to Grade Retention Rates Based on Previous 10 Years



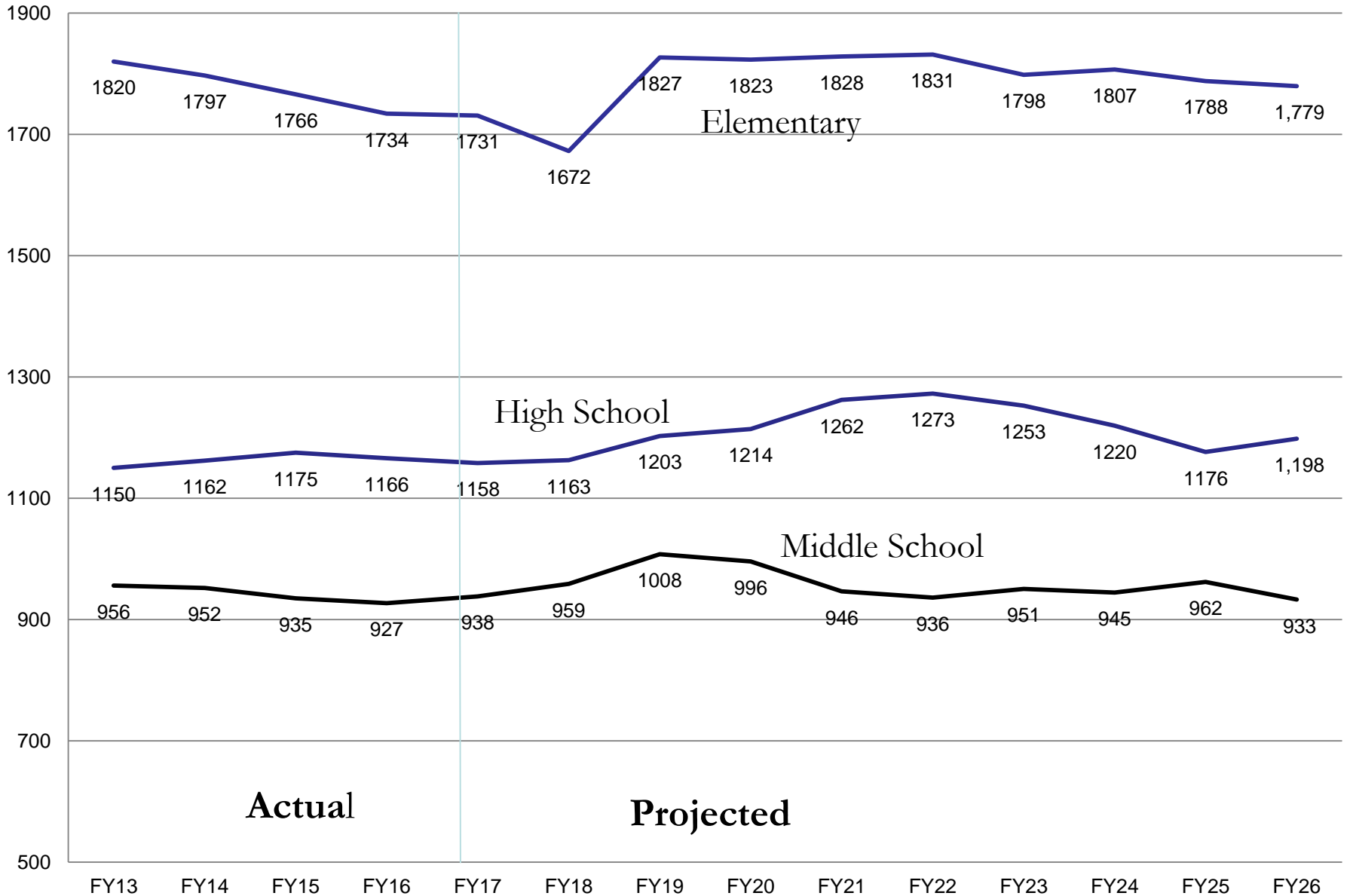
Births and Kindergarten Enrollment



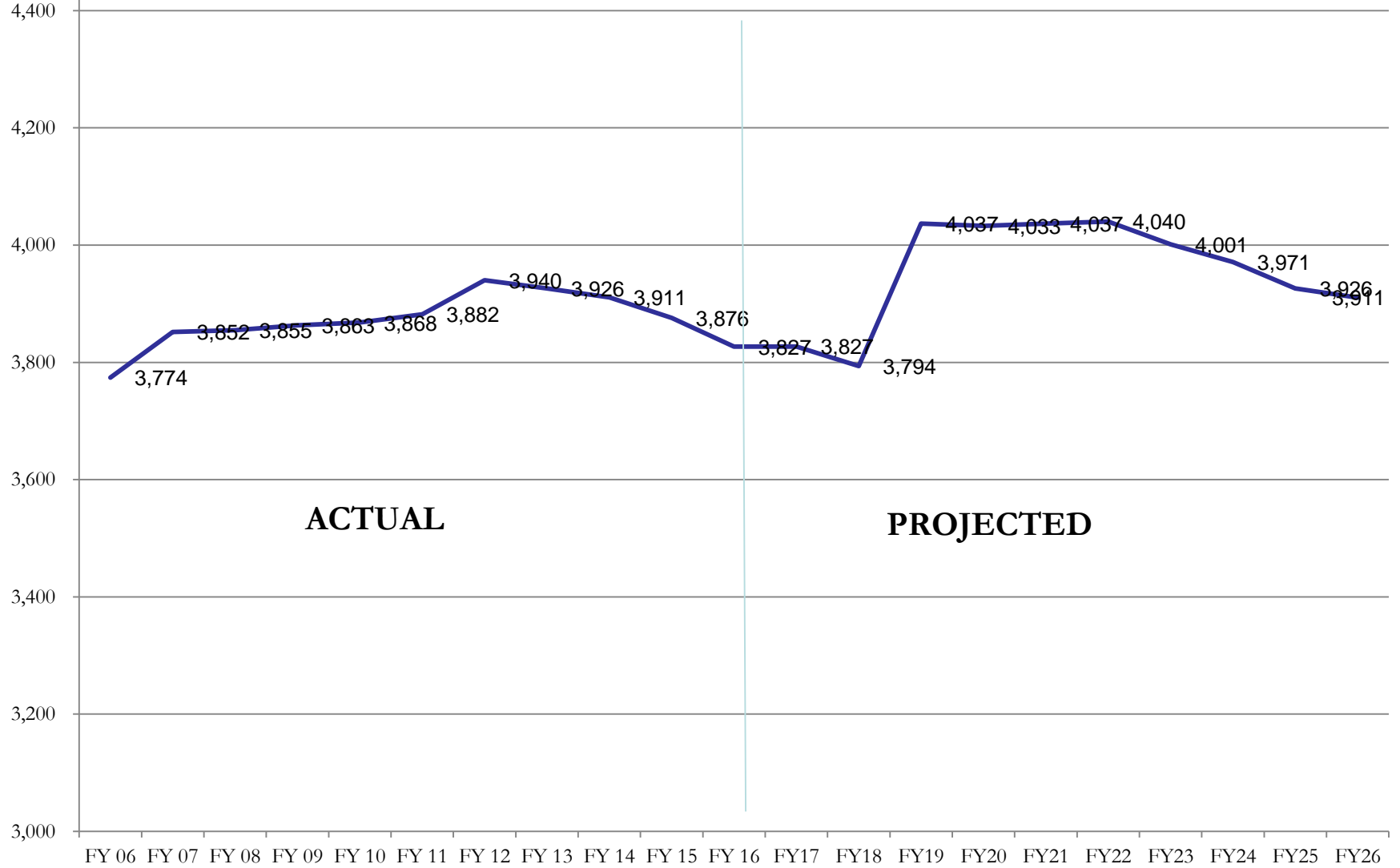
Ratio of Enrollments to Births



Walpole Public Schools Enrollment Trend by Level



Total District Enrollment Trend



Walpole Public Schools Enrollment Study

Conclusions:

- Very reliable retention rate data
- K to Birth ratio unreliable
- Declining enrollment to continue
- Trend reversal expected in 2019
- Robust building development impact included in study beginning September 2018